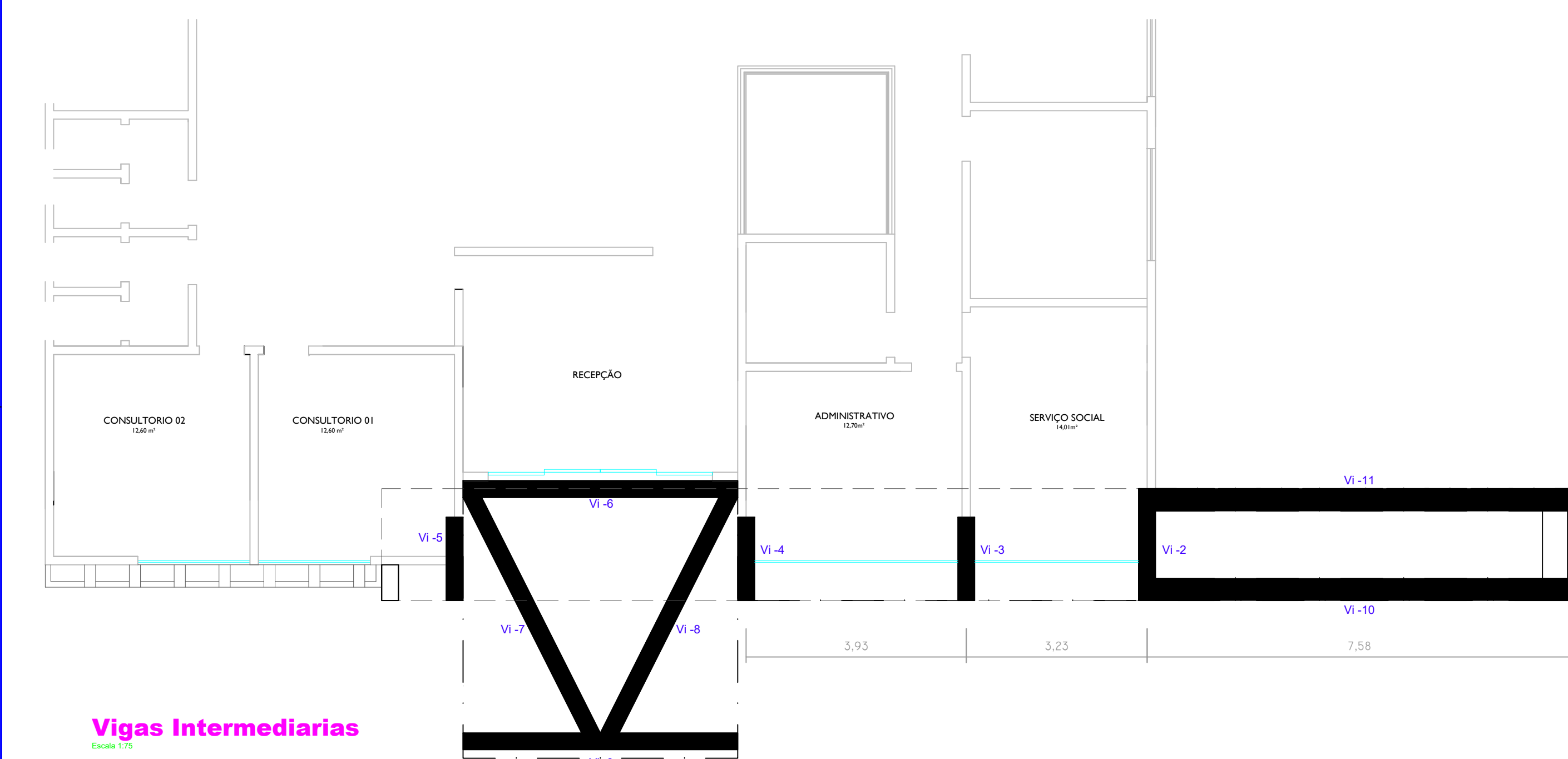
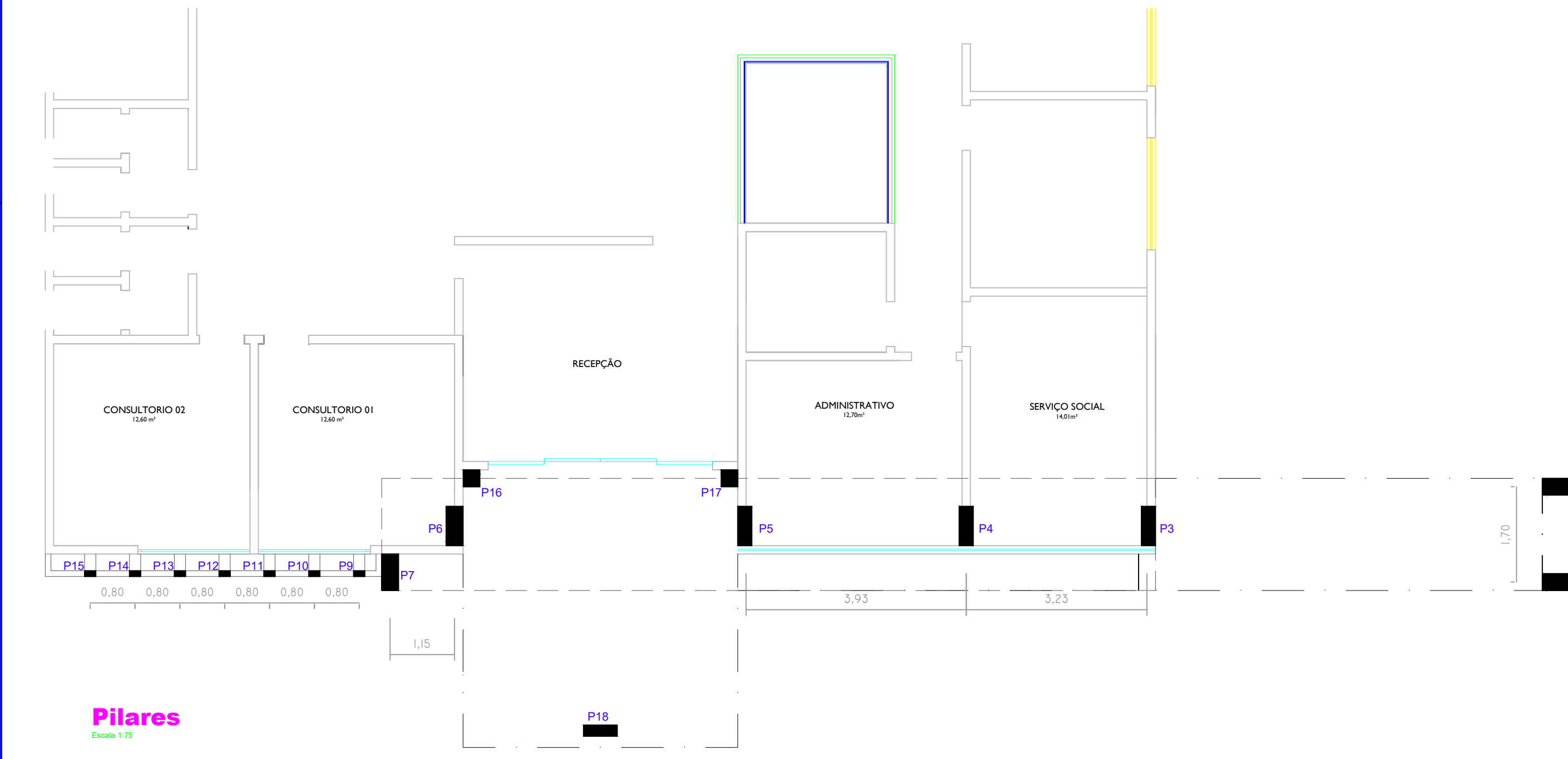


A2

B

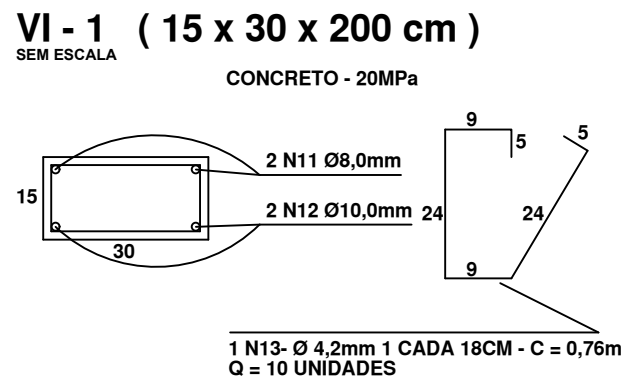


Vigas Intermediarias
Escala 1/75

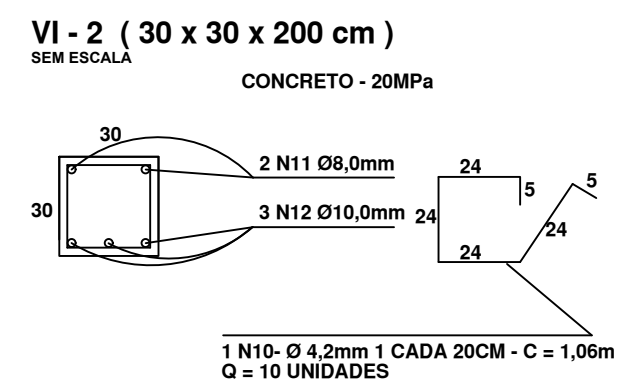


Pilares
Escala 1/75

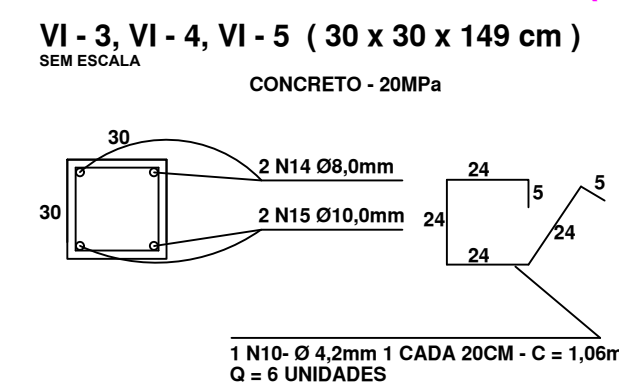
VIGAS INTERMEDIARIAS



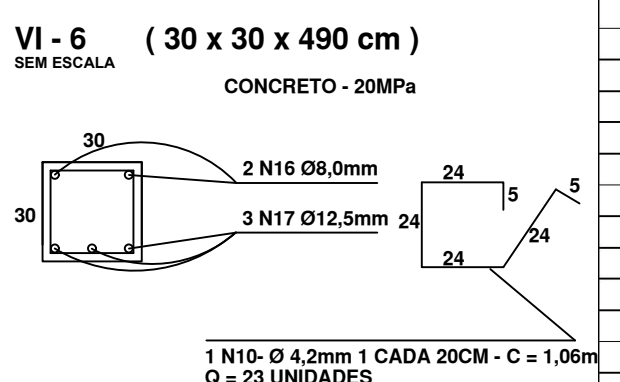
VIGAS INTERMEDIARIAS



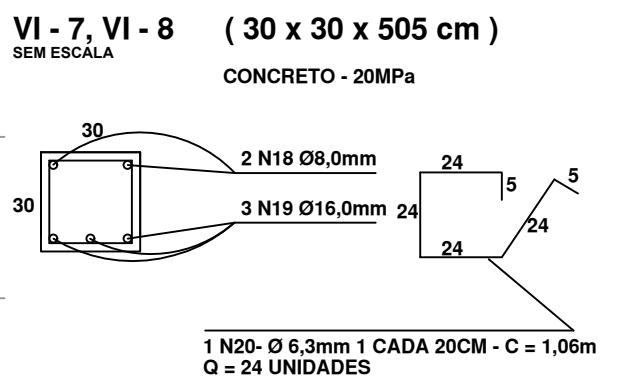
VIGAS INTERMEDIARIAS(3X)



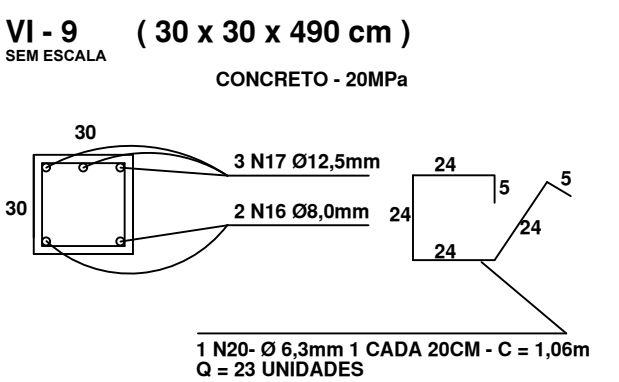
VIGAS INTERMEDIARIAS



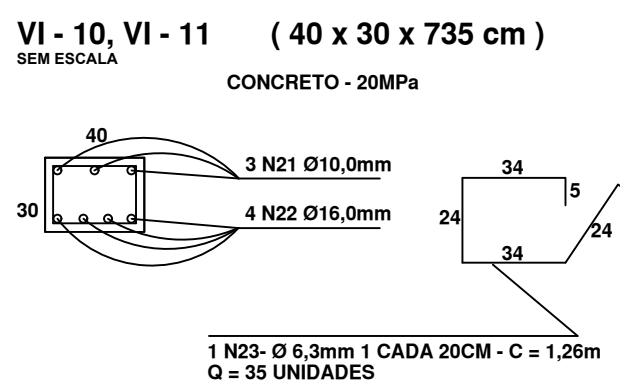
VIGAS INTERMEDIARIAS(2X)



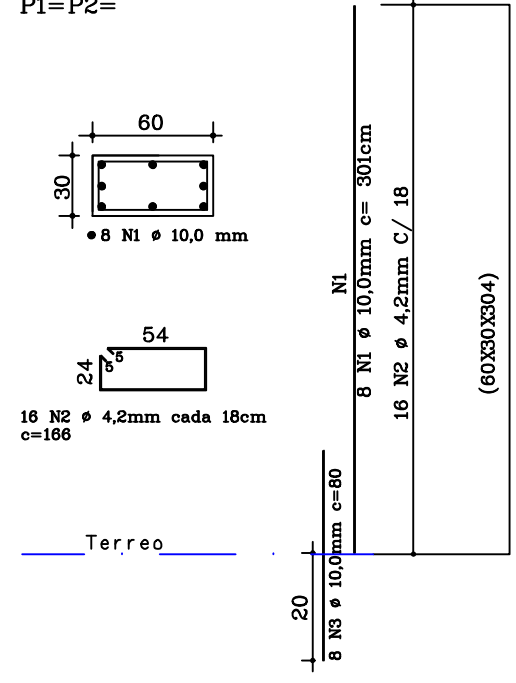
VIGAS INTERMEDIARIAS



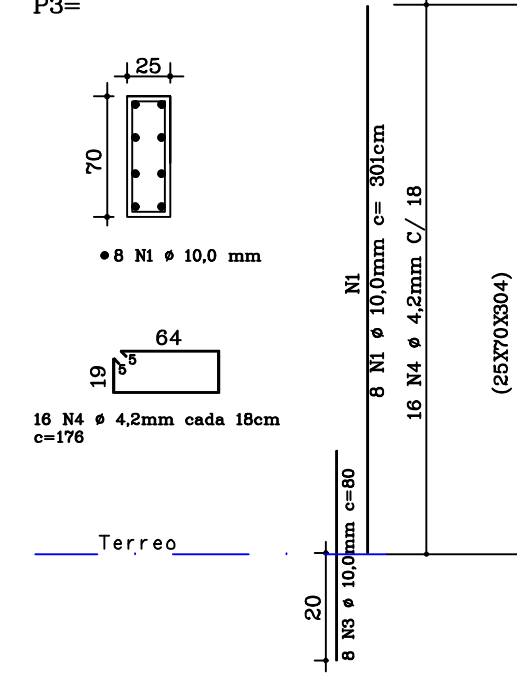
VIGAS INTERMEDIARIAS(2X)



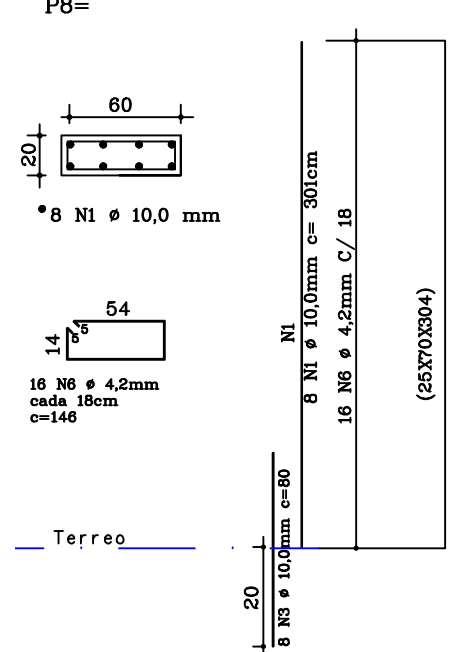
PILARES (60X30X304) 2x



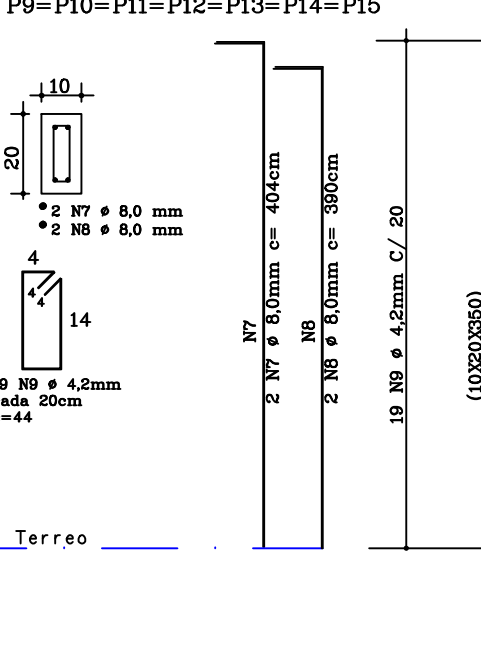
PILARES (25X70X304)



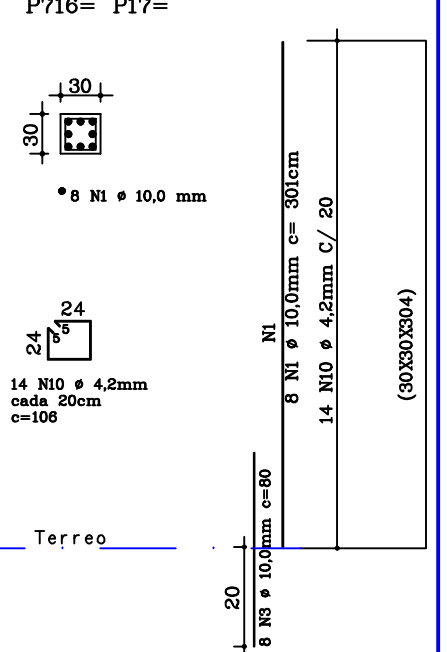
PILARES (25X70X304)



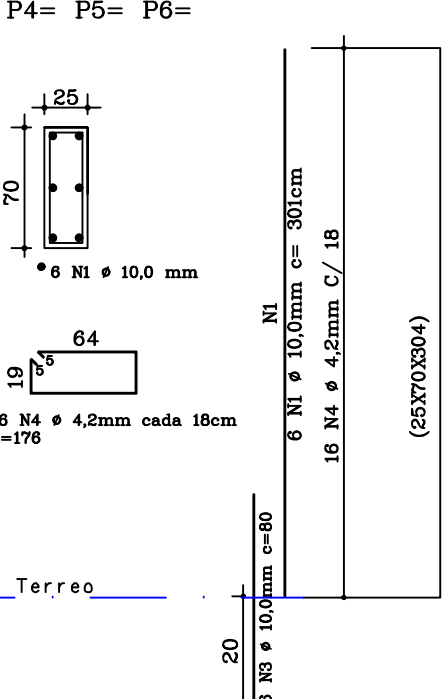
PILARES (10X20X355)7x



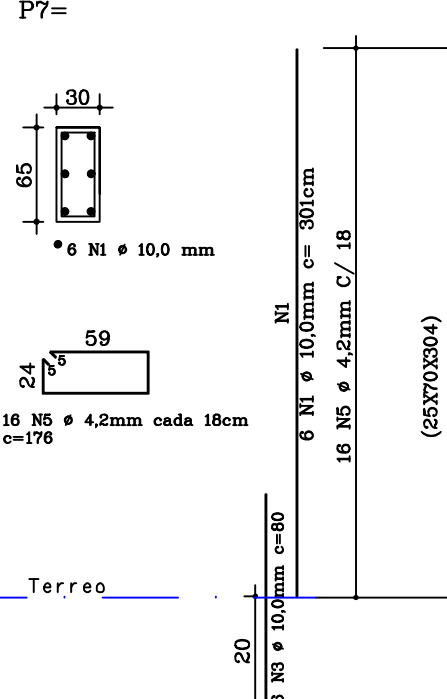
PILARES (30X30X304)2x



PILARES (25X70X304)3x



PILARES (30X65X304)



PROJETO ESTRUTURAL

OBRA
AMPLIAÇÃO de FACHADA e GARAGEM UBS-VENTANIA

END. Avenida Anacleto Bueno de Camargo - Centro - Ventania - PR

PROPRIETÁRIO

PREFEITURA MUNICIPAL DE VENTANIA PR

RESP. TÉCNICO
Eng. CIVIL EDJO JOSE STIMAMIGLIO
CREA PR-14316/D

ANTÔNIO HELLY SANTIAGO
PREFEITO MUNICIPAL

FOLHA
02/04

ESCALA INDICADA

DATA DEZEMBRO / 2019

DESENHO
JEFFERSON PHILLIPI